

Internal Health Check

Why do you need an internal health check?

Being a pet we know that you don't always tell your owners when you feel sick until you stop eating or become lethargic. We know this is a protective mechanism. Back when you were wild animals, showing signs of sickness meant you were weak and more prone to being killed and eaten. So hiding your sickness is normal and because you can't talk, it is often difficult to know from the outside. So we rely on an observer, who is usually busy working or looking after the children, to notice the small changes in your behaviour that gives clues that something is not right.

An ***Internal Health Check*** will pick these changes before you show signs, also called "sub-clinical disease"

What is an internal health Check?

There are 2 ways we as Vets can detect disease in our pets.

1. ***External Health Check*** is a physical exam where we look at, palpate and listen to parts of the body from the outside. We check lumps externally and in the stomach, change in the size of glands, change in the colour or texture of skin, eyes and ears and listen to the heart for change in rate and sound of the heart beat.

*****Twice yearly at Vaccination and 6 month later at internal health check*****

2. ***Internal Health Check*** is a blood and urine test. – see next page

***** We should do this yearly*****

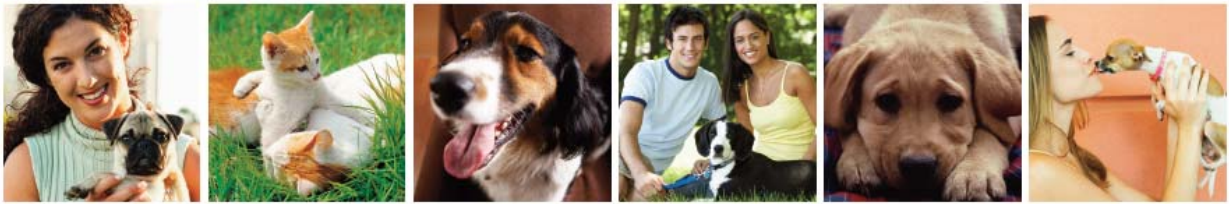
At Randwick Vet we want to reward your owner for taking care of you by sourcing a reduced rate for our internal health check - only \$95

Value is External Health Check + Biochem+ Blood Count + Urinalysis= \$250










Please bring this voucher to redeem your \$95 Internal Health Check

<p style="text-align: center;"><u>Voucher</u> Internal Health Check \$95</p> <p><i>Please bring urine in a container for the urine test.</i></p> <p><u>Preventative Care Program</u></p> <ul style="list-style-type: none">• External Health Check twice yearly- including weight and dental check• Internal Health Check yearly• Vaccination – yearly <p>Choosing the best nutrition, heartworm, intestinal worm, flea and tick prevention treatment</p>

Internal Health Check



PREVENTION IS BETTER THAN CURE

Health Category	Internal Health Check	Prevention/Treatment
 Teeth	Oral exam, Blood Chemistry, Complete Blood Count (CBC), Electrolytes, Urinalysis	Yearly Dental Scale and Polish Raw Bones, Hills T/D, Royal Canin Dental
 Liver	Physical Exam Blood Chemistry, Complete Blood Count (CBC), Electrolytes, Urinalysis	Ursodeoxycholic Acid Capsules Hills L/D
 Kidney	Physical Exam Blood Chemistry, Complete Blood Count (CBC), Electrolytes, Urinalysis, Urine Protein: Creatine Ratio	Hills K/D, Royal Canin Renal Check Blood Pressure Benzapril Tablets
 Heart and Lungs	Chest Xrays, Physical Exam Blood Chemistry, Complete Blood Count (CBC), Electrolytes, Urinalysis	Piobendian, Benazapril Weight Loss Hills H/D
 Joints	Physical Exam Blood Chemistry, Complete Blood Count (CBC), Electrolytes, Urinalysis	Pentosan Injection, Glucosamine, Chondritin and Green Lip Muscle Hills J/D, Royal Canin Mobility, Weight loss
 Organs	Physical Exam Blood Chemistry, Complete Blood Count (CBC), Electrolytes, Urinalysis	Depending on findings
 Cancer	Physical Exam Blood Chemistry, Complete Blood Count (CBC), Electrolytes, Urinalysis	Depending on Cancer Keeping white animals out of sun from 10-3pm
 Eyes	Baseline Eye Exam, Physical Exam Blood Chemistry, Complete Blood Count (CBC), Electrolytes, Urinalysis	Depending on findings
 Gastrointestinal Disease	Physical Exam Blood Chemistry, Complete Blood Count (CBC), Electrolytes, Urinalysis	Diet Change Allergy Free Diet Hills Z/D or I/D Royal Canin Hypoallergenic or Intestinal

These are some of the tests your veterinarian may recommend for your pet

Blood Chemistry

Blood chemistry tests provide information concerning your pet's vital organs, such as the kidneys, liver, pancreas, thyroid, parathyroid and intestinal tract. These tests can be used to indicate dehydration, endocrine diseases, certain types of tumours, and, can also be used to characterise anaemia.

Complete Blood Cell Count (CBC)

The CBC provides information concerning the various types of blood cells. The red blood cells (RBC's) carry oxygen to the tissue of the body. White blood cells (WBC's) are the body's primary defense against infection. Platelets play a major role in the blood clotting process and are essential for halting the bleeding process.

Urinalysis

The urinalysis provides important information about the functioning capacity of the kidneys. In addition, the urine contains by-products from many organs and abnormal levels of these by-products can indicate disease such as liver and kidney disease or diabetes.

Electrolytes

In order to maintain life, the appropriate balance of electrolytes is vital. Certain diseases or conditions may result in electrolyte imbalances that could compromise a pet's health and ultimately become life threatening.

Other Tests

Depending on your pet's age, history and physical exam, an ECG (electrocardiogram) or serum thyroid levels may be recommended.

ASK FOR AN ANNUAL HEALTH CHECK TODAY

RANDWICK 9398 1222 NORTHBRIDGE 9958 0177 LINDFIELD WEST 9415 8000

VETMED 
PROFESSIONAL VETERINARY CARE